

Key

- | | |
|------------------|--------------|
| Restrooms | UCSD Shuttle |
| Water Station | First Aid |
| Checkpoint/Entry | Binoculars |
| Ticket Sales | Photo Op |
| Information | Picnic Area |
| ATM | Food |
| Gift Shop | |

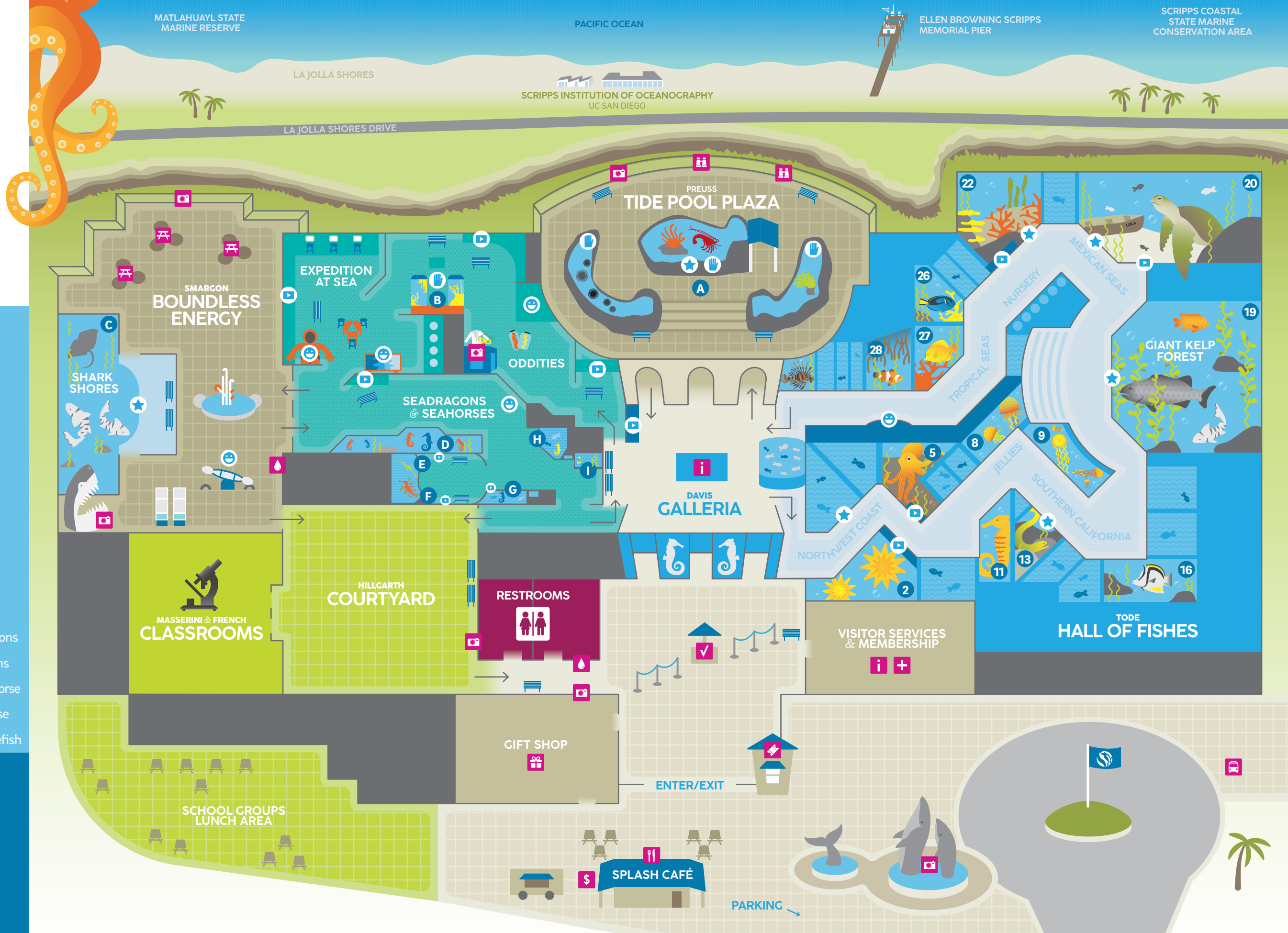
Don't MISS THESE EXHIBITS

- | | |
|--|--|
| 2 Sunflower Stars | 27 Live Coral |
| 5 Giant Pacific Octopus | 28 Mangroves Clownfish |
| 8 9 Jellies | A Tidepool Plaza
Sea Anemones
Sea Urchins
California Spiny Lobster |
| 11 Pacific Seahorses | B Tropical Touch Experience |
| 13 Moray Eels | C Shark Shores
Leopard Sharks
Stingrays |
| 16 Scythe Butterflyfish | D Seahorses |
| 19 Giant Kelp Forest
Giant Sea Bass
Garibaldi
Leopard Sharks
Kelp | E Weedy Seadragons |
| 20 Loggerhead Sea Turtle | F Leafy Seadragons |
| 22 Research in Action
Coral Reefs | G Pot-Bellied Seahorse |
| 26 Live Coral
Blue Tangs | H Spotted Seahorse |
| | I Shrimpfish/Pipefish |

ACTIVITIES

- | | |
|---|---|
| Touch
Get hands-on with live animals. | Play
Interactive exhibits! |
| Feedings & Shows
Animal feedings occur daily. See the schedule on the reverse side. | Watch
Learn more with educational videos. |

We connect understanding to protecting our ocean planet.



Keep IN MIND

Emergencies/First Aid +

Please head to Visitor Services or alert the nearest staff member. Basic first aid supplies are also available at Visitor Services.

Accessibility i

All exhibits are wheelchair accessible. Wheelchairs are available free of charge on a first-come, first-served basis. See the Information Desk for assistance. Only trained service animals are permitted inside Birch Aquarium.

Photography 📷

Guests are encouraged to take photos and video for personal use. Share with #BirchAquarium.

- Flash photography is allowed, except where noted
- No tripods
- Commercial photography requires prior permission

Guests may be recorded by aquarium staff or media for marketing and educational purposes. Entry into the aquarium grants permission for use of these images.

Shop & EAT

Splash! Café

Open 9 a.m. to 4:30 p.m. daily
Splash! Café by The French Gourmet offers an array of grilled specialties, gourmet pastries, sandwiches, and salads, along with craft beer and wine.*



*Members save 10% every day.

Gift Shop

Open 9:30 a.m. to 5 p.m. daily
Ocean-themed gifts including home decor, jewelry, toys, games, and a large selection of children's, scientific, and gift books.*

We also carry Birch Aquarium and Scripps Institution of Oceanography logo apparel and souvenirs, and can ship anywhere in the U.S.

Welcome

We hope you enjoy your visit. If you have any questions, stop by the Information Desk in the Galleria or Visitor Services, located by the front entrance.

Open 9 a.m. to 5 p.m. daily

(Closed on Thanksgiving, Christmas, New Year's Day)
Last ticket sold at 4:30 p.m.



Parking

Birch Aquarium offers complimentary 3-hour parking, full day passes are available at Visitor Services.

Re-entry

Please have your hand stamped at the entry podium if you plan to exit and re-enter the same day, including visits to Splash! Café.

Restrooms & Baby Care 🚻

Changing tables are located in the men's and women's restrooms near the Gift Shop.

Daily SCHEDULE

		Time	Map	Narrated
Monday	Tide Pool Experience	2:00	A	✓
Tuesday	Shark Shores Feeding	10:30	C	
	Kelp Forest Dive Show	12:30	19	✓
	Sea Turtle Feeding	3:00	20	
Wednesday	NW Coast Feeding	10:00	2	
	Southern California	10:30	13	
	Tropical Seas Feeding	11:00	22	
	Tide Pool Experience	2:00	A	✓
Thursday	Shark Shores Feeding	10:30	C	
	Kelp Forest Dive Show	12:30	19	✓
	Sea Turtle Feeding	3:00	20	
Friday	Tide Pool Experience	2:00	A	✓
Saturday	Shark Shores Feeding	10:30	C	
	Kelp Forest Dive Show	2:00	19	✓
Sunday	Kelp Forest Dive Show	10:30	19	✓

Want MORE?

Host an Event

Birch Aquarium is where science meets sophistication. Pair the enchantment of the underwater world with breathtaking ocean views at our one-of-a-kind venue. Whether a wedding, corporate event, or social engagement, it's sure to be an event your guests will never forget.

Groups

Planning an outing for adult groups of 10 or more? Birch Aquarium has a variety of options for your group including discounted tickets, guided tours, and classes.

MAKE THE MOST OF YOUR VISIT

Turn today's visit into a membership and visit all year long. Annual memberships start at just \$55 and pay for themselves in less than two visits.

Don't MISS

Dive Show Map location: 19

See divers descend into our two-story Giant Kelp Forest to feed Leopard Sharks, Garibaldi, and Moray Eels! Be sure to arrive early as seating is limited. The Dive Show is also broadcast live inside the Galleria and on our website.

Tide Pool Experience Map location: A

A feeding with a view! The outdoor Preuss Tide Pool Plaza feeding brings guests face-to-face with the hardy organisms that live in tide pools, the rocky intertidal zone between land and sea.

Please see daily schedule for times.

Adventures

Learn more about our ocean planet by taking part in our seasonal outdoor adventures.

- Whale Watching
- Snorkeling
- Tidepool Adventures
- Monthly Lectures
- Grunion Runs
- Summer Camps
- Summer Concert Series
- Pier Walks



GUIDE MAP Visitor

Become A VOLUNTEER

Give Today
Philanthropy is essential to fulfill our mission.

Help visitors from around the world discover the wonders of the ocean.

Thanks to you, we are able to connect understanding with protecting our ocean planet by showcasing Scripps Oceanography's important research.

We could not do this without your support.

Each year more than 400 volunteers donate over 30,000 hours to Birch Aquarium.

Our volunteers assist guests, school children, and behind-the-scenes operations, and we truly could not survive without them.

