



Name: _____

Animal Adaptations-**Key**

You met kelp forest animals at the aquarium. Many of these animals have adaptations. Adaptations are body parts and behaviors that help the animal survive.



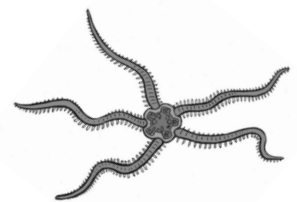
Draw your favorite kelp forest animal. Circle the adaptations the animal uses to get food. Write the names of these adaptations.

Responses may vary. Possible animals discussed in the class are:

Animal	Adaptations
Sea Snail	Mouth, eyes, foot (may also include shell)
Brittle Star	Mouth, spines, feet and legs (tube feet)
Sea Cucumber	Mouth, spines, feet and legs (tube feet)
Hermit Crab	Mouth, legs, eyes, pinchers
Sea Urchin	Mouth, spines, feet and legs (tube feet)

How do these adaptations help the animal get food?

Answers may vary but may include moving to get food, catching food, or eating it.



Imagine that you could have one of the adaptations your favorite kelp forest animal has. How would it help you?

Answers may vary but should include one of the adaptations from above and how it could help a human with their everyday tasks.