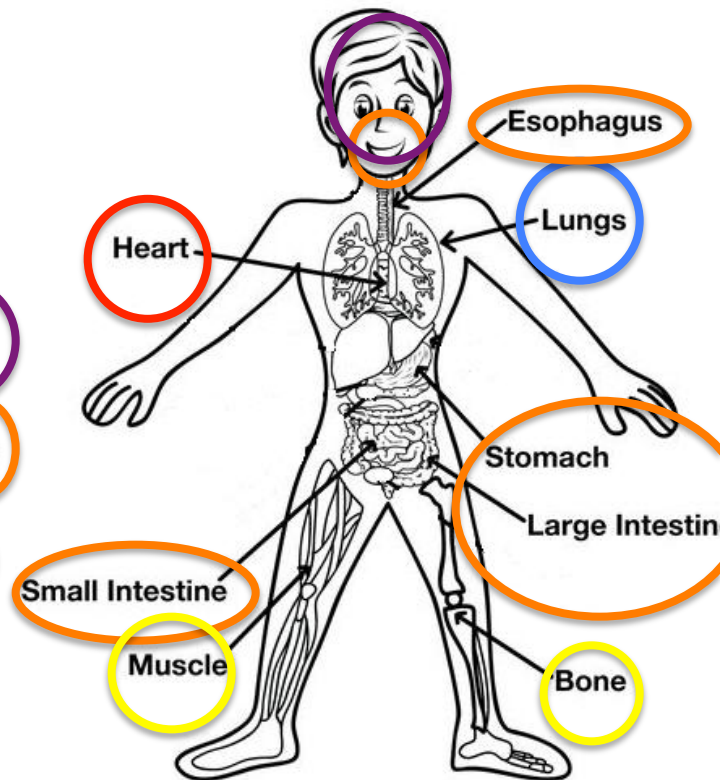
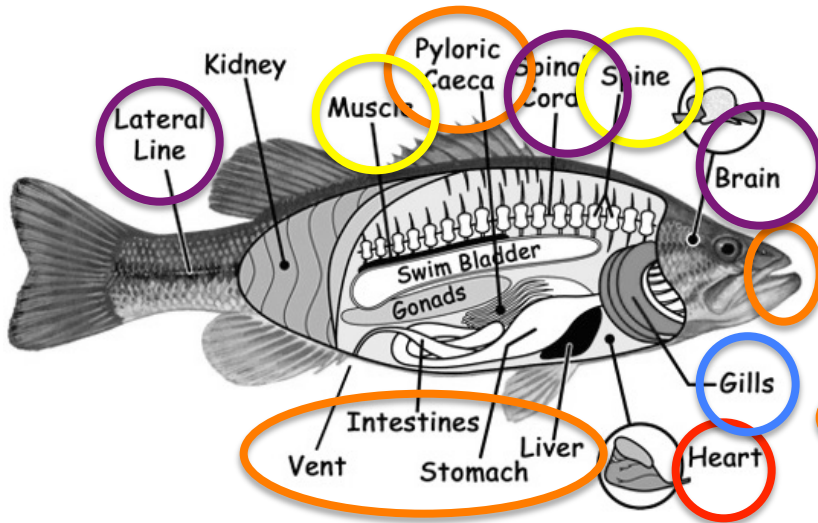


Comparing Body Systems in Humans and Fish

During our dissection of the Pacific Mackerel, we learned that fish have many interacting structures that create systems within their bodies. Let's make more comparisons between the structures and systems of fish and humans.

- Color the following structures that make up the systems on both fish and humans:
 (answers are circled instead of colored in)
 a) yellow= skeletal/muscular
 b) red= circulatory
 c) blue= respiratory
 d) orange= digestive
 e) purple= sensory/nervous
- Choose 2 systems from the list above.
 Compare and contrast the structures found in each of the systems in both fish and humans.



- Think about a system you'd like to learn more about. What structures are a part of this system? Why does it interest you?