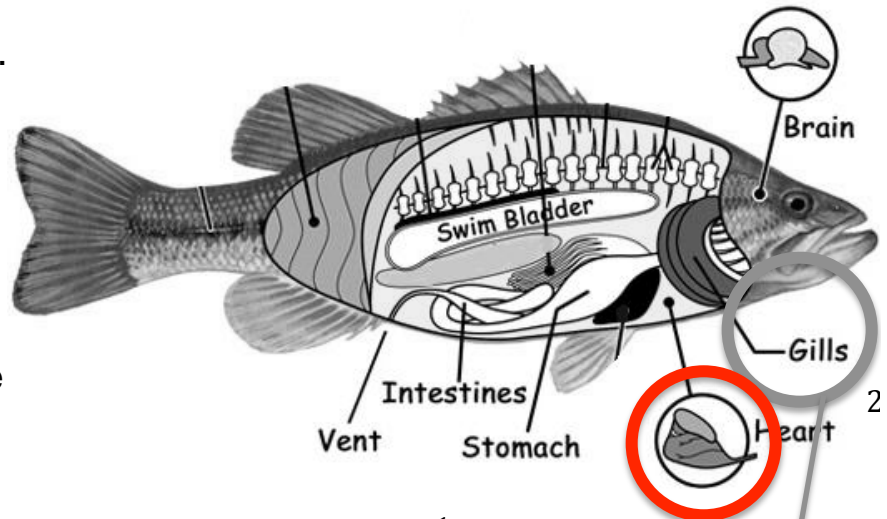


# Comparing Body Structures in Humans and Fish

During our dissection of the Pacific Mackerel, we learned that fish have a stomach, tongue, and eye lenses like we do. Let's make more comparisons between the body structures of fish and humans.

1. Fish use fins to move. Circle the body parts that humans use to move. How are these parts similar or different in fish and humans? **Legs, feet muscles, bones, brain, eyes, etc.** Our legs and feet have strong bones inside with muscles surrounding them, while fish fins are boney with the muscles attaching to the main body. Legs and feet can support the entire body weight, while fins cannot. Fins are also more flexible.
2. Circle and draw a line connecting the two kinds of structures that fish and humans use to breathe. **Gills and lungs**



3. Use red to color the structures that help pump oxygen around the bodies of fish and humans. **Hearts**
4. Find the structures that fish and humans have for digestion. Color them orange. What are the steps of the digestive system for both fish and humans, starting at the mouth? **Mouth, esophagus, stomach, small intestine, large intestine, and anus or vent**
5. Think about a structure you'd like to learn more about. Color it yellow. Why does it interest you? **Answers will vary**

